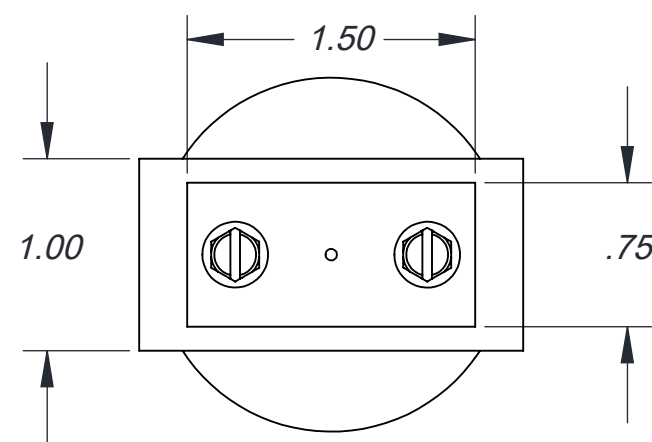
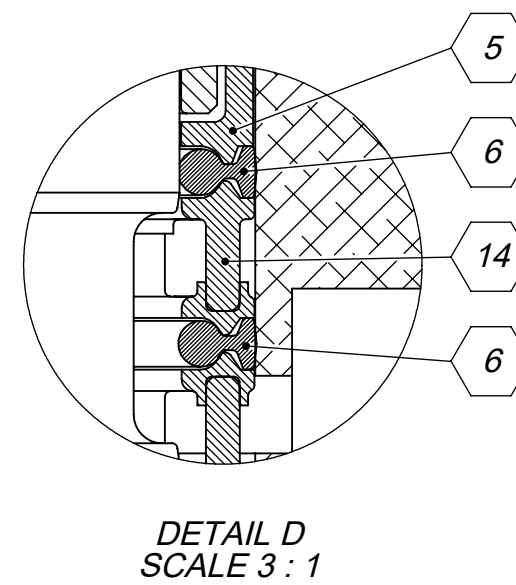


ITEM NO.	PART NUMBER	DESCRIPTION	QTY.
1	01-0225	NUT, 1/4-20, ZINC	1
2	01-0281	BUTTON, PALM	1
3	01-0282	RETAINING RING, INT., .625, PHOS	1
4	01-2027-1	SCREW, HHC, 8-32 X .37	2
5	11-0300	SPACER, END	2
6	11-0302	SEAL, MINI-1	4
7	11-0304	WASHER, SPRING SUPPORT	1
8	11-0308	BODY, VALVE, 3 WAY	1
9	11-0309	SPRING, COMP.	1
10	11-0316	SPACER TUBE	1
11	11-0334	END PLATE	1
12	11-0337	SPOOL, 3 WAY	1
13	11-0349	GUIDE, SPOOL	1
14	11-0362	SPACER ASSY., SEAL	3



- NOTES:
- SPOOL TRAVEL: .300 MAX.
 - OPERATING PRESSURE: 150 PSI MAX.
 - TEMPERATURE RANGE: -20° F TO 160° F.
 - PRIMARY OPERATOR: PALM BUTTON
 - SECONDARY OPERATOR: SPRING RETURN.
 - SERVICE MEDIA: PNEUMATIC.
 - SEAL MATERIAL: STD. = BUNA-N
 - SERVICE PARTS ARE MARKED IN A CIRCLE.
 - REPAIR PARTS ARE MARKED IN A HEX.
 - REPAIR KIT: STD. = 11-0394.

THIS DOCUMENT AND ITS CONTENTS ARE THE PROPERTY OF LEXAIR, INC. THEY ARE FURNISHED TO YOU ON THE FOLLOWING CONDITIONS: NO RIGHT OR LICENSE IN RESPECT OF THIS DOCUMENT OR ITS CONTENTS IS GIVEN OR WAIVED IN SUPPLYING THE DOCUMENT TO YOU. THIS DOCUMENT OR ITS CONTENTS ARE NOT TO BE USED OR TREATED IN ANY MANNER INCONSISTENT WITH THE RIGHTS OF LEXAIR, INC. OR TO ITS DERIVATIVE AND ARE NOT TO BE COPIED, REPRODUCED, OR DISCLOSED OF, EXCEPT WITH ITS PRIOR WRITTEN CONSENT.

REVISIONS

REV	DATE	DESCRIPTION
A	03-15-02	TPO REDRAWN TO CURRENT ENG. STANDARDS.
B	04-24-04	JDR ADDED DATE STAMP NOTE CHK: JDR APVD: TPO
C	22002 08-24-21	TES UPDATED TO CURRENT ENG. STDS.
D	22029 04-04-22	TES ADDED TRAVEL DIM

Tolerances Unless Otherwise Specified: TYPE FINISHED AS CAST DEC .00 ± .015" ± .030" DEC .000 ± .005" ± .010" FRACTIONAL ± 1/64" ± 1/32" ANGLES ° ± 1/2° ± 1° FINISH 175 μ in.	MATERIAL SPEC.	PC NO.: M3820601
	PROCESS SPEC.	MADE FROM: SEE SCHEDULE
VALVE ASSY., MINI1 3 WAY, PALM BUTTON, SPRING RETURN		MODEL FILE: M3820601.sldasm
Lexair, Inc. 2025 Mercer RD, Lexington, Kentucky 40511		CAD FILE: M3820601.slddrw
DRAWN TPO CHECKED MFM APRVD MFM	SHEET NO. 1 of 1 SCALE 1:1 APPROX. WT. 0.55 LBS	SHEETS